



prima[®]

simply stylish worktops

contents

Designing your dream kitchen	3
Select your perfect worktop	5
Woods	7
Stones	15
Engineered	29
Metal and solid colours	35
Feature splashbacks	41
Sizes and edging	45
Why Formica Prima®?	47
Size and availability	49

simply stylish worktops

Contemporary. Striking. Enduring.

If you're looking for a kitchen as beautiful as it is long-lasting, the Formica Prima® Collection of 34 worktops and ten feature splashbacks offer style and simplicity.

From light woods through to warm stones and solid colours, this captivating suite of designs works with every kitchen space, bringing the latest trends and tastes into the hub of your home.

Every worktop is 38mm thick with a tight curved edge. The collection is perfectly sized with worktops available in 4.1m and 3m lengths, with matching splashbacks and upstands also available. Each one of the five stunning textures has been selected for each worktop, providing the tactility and authenticity that perfectly enhances each design.

This means you can concentrate on the job in hand: creating the dream look for your new kitchen.



Rural Oak Matte 58 (worktop and matching splashback)

designing your dream kitchen

Choosing your Formica Prima® worktop
has never been easier.

With wood, stone and engineered design palettes expertly matched to the perfect curved edge profile, thickness and texture, you are free to focus on what really matters; finding the perfect design to bring your vision to life.



Rural Oak Matte 58 (worktop and matching splashback)

select your perfect worktop

The Formica Prima® Collection consists of 34 stylish worktops split across five expertly designed palettes:

Woods: *Light and Dark*

Stones: *Light, Warm and Dark*

Engineered

Metal

Solid colours



Rural Oak Matte 58 (worktop)



woody

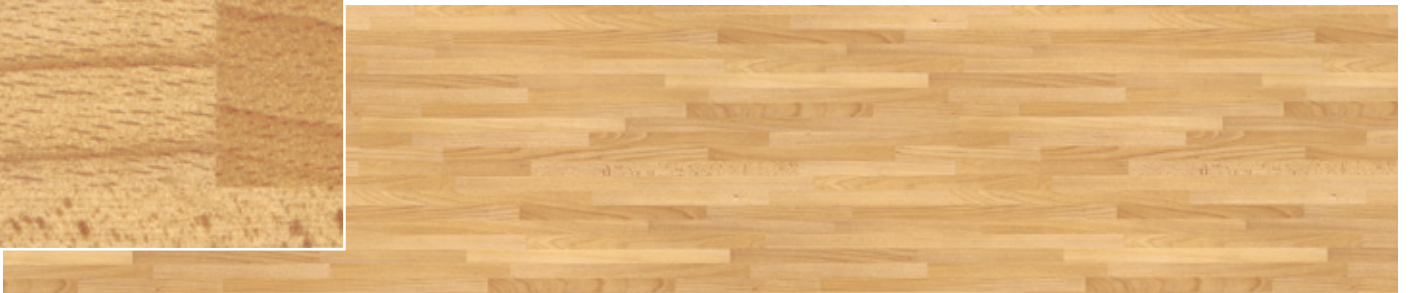


Rural Oak Matte 58 (worktop and matching splashback)

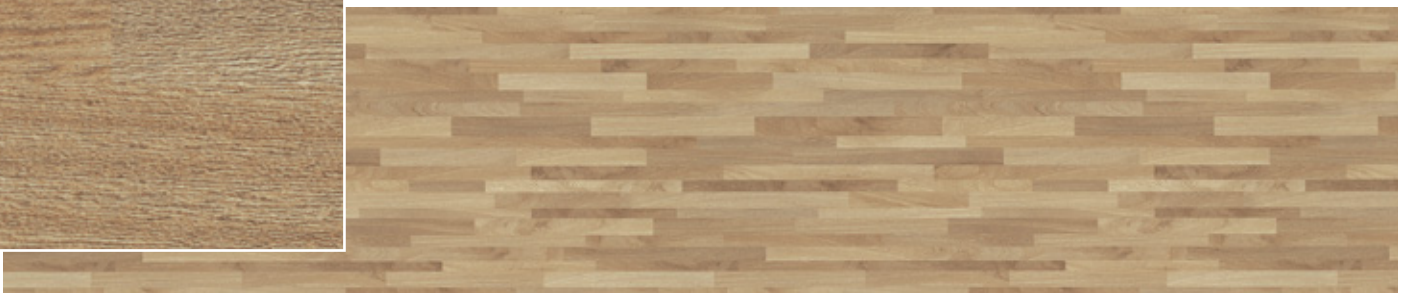
woods: light



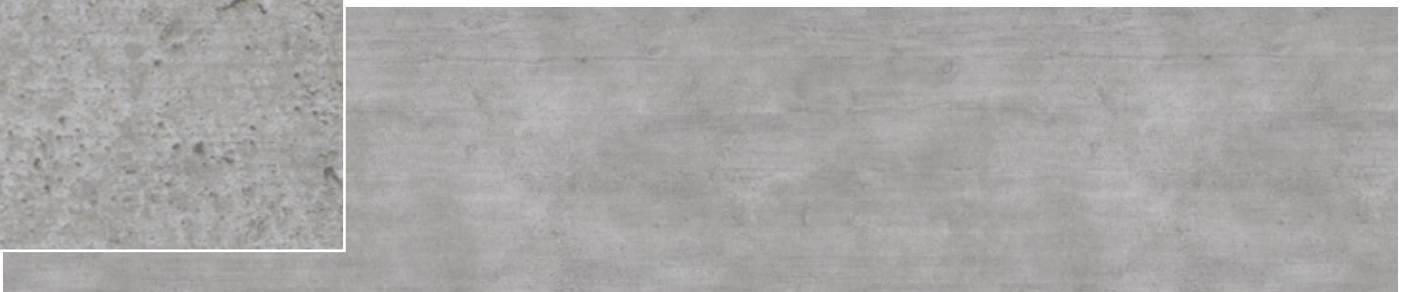
Beech Butcher Block
Matte 58



Raw Planked Wood
Woodland



Planked Concrete
Ardesia

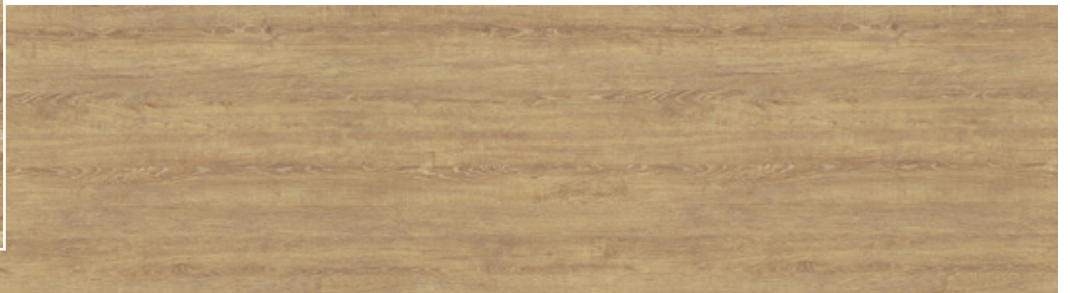




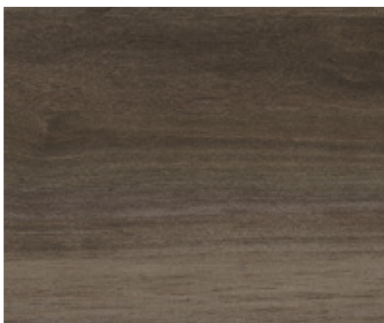
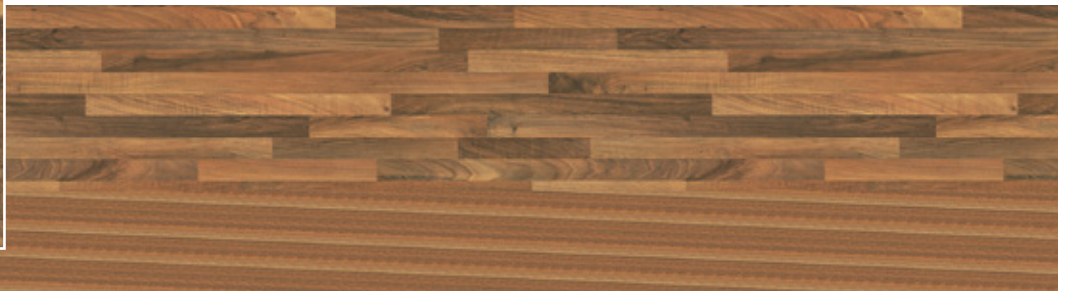
woody: dark



Rural Oak
Matte 58



Natural Block Walnut
Matte 58



Smokey Planked Walnut
Woodland









Brushed Zinc Matte 58 (splashback)
Stained Planked Wood Woodland (worktop and breakfast bar)





stones

White Bardiglio Ardesia (worktop with matching splashback and upstand)

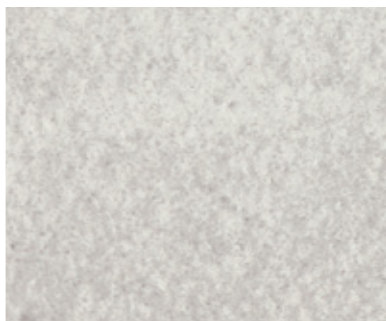


stones: light



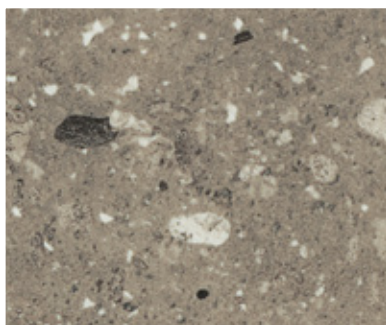
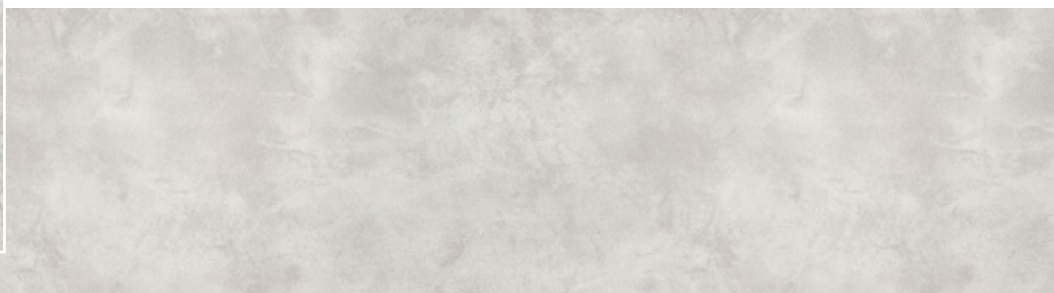
Calacatta Marble

Matte 58



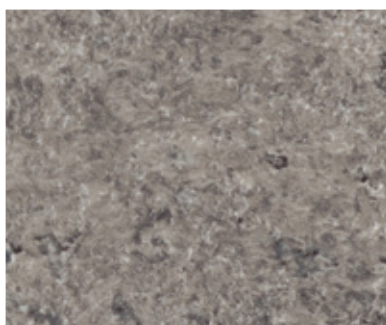
White Portland

Ardesia



Grey Riverstone

Matte 58



Grey Chalkstone

Honed Ceramic





White Bardiglio Ardesia (worktop with matching splashback and upstand)





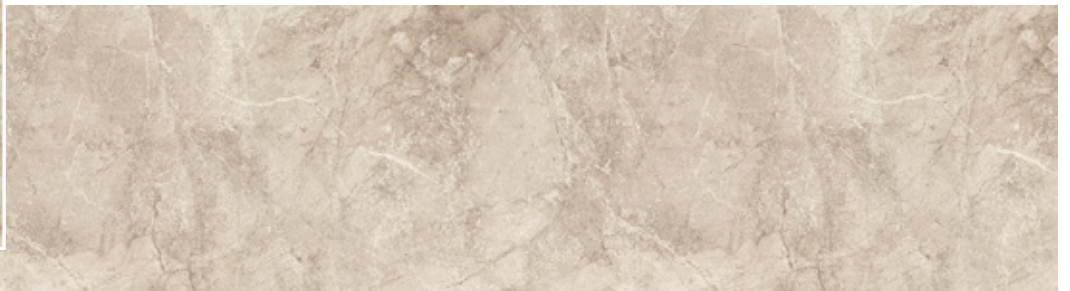
stones: warm



Marfil Cream
Etchings 48



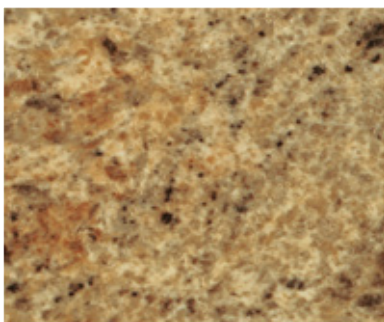
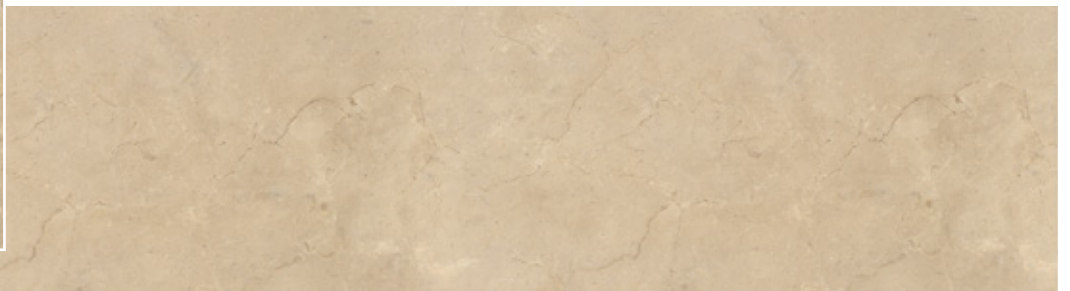
Marmara Cream
Ardesia



Crema Mascarello
Etchings 48

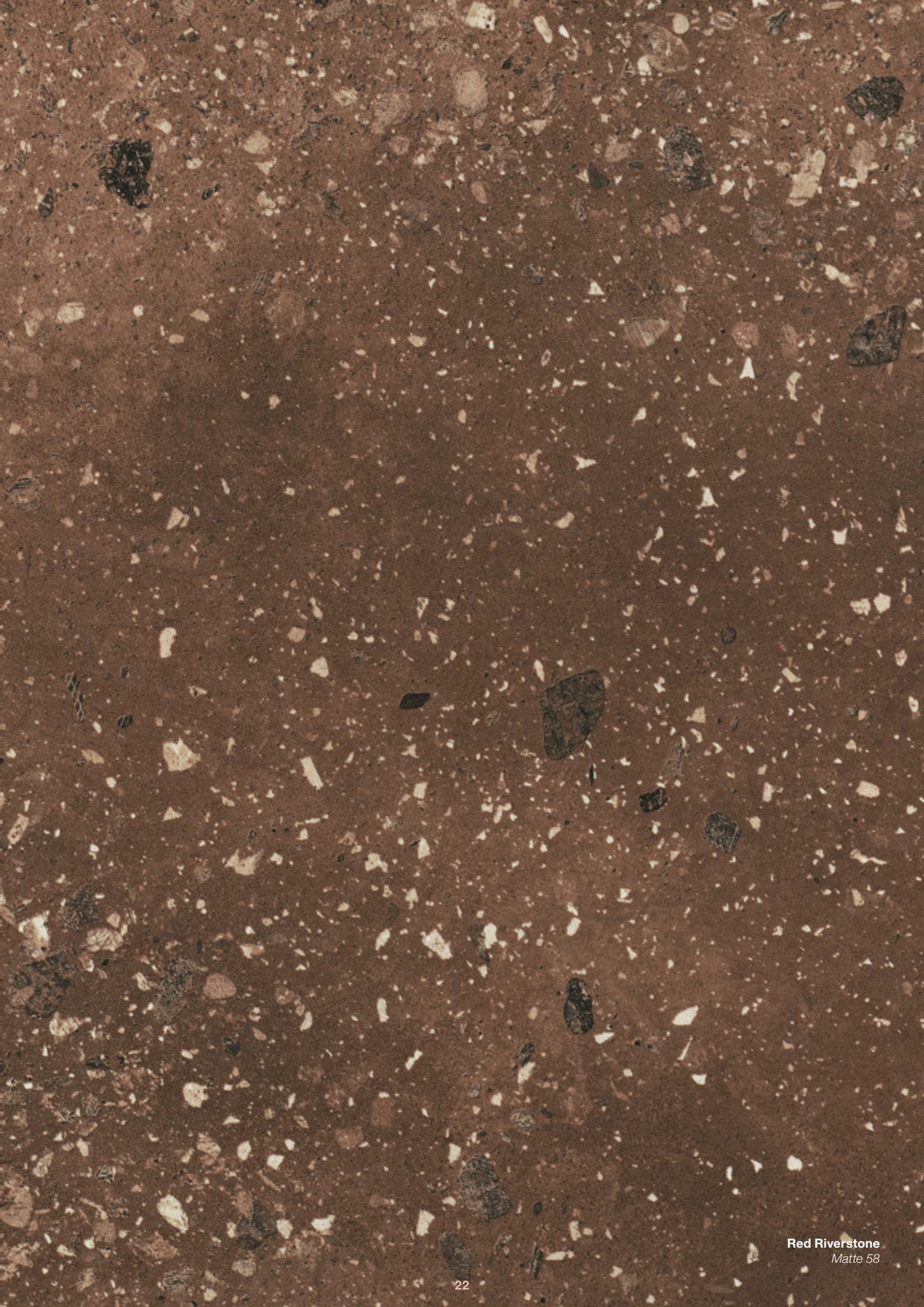


Marfil Antico
Etchings 48



Amber Kashmire
Etchings 48



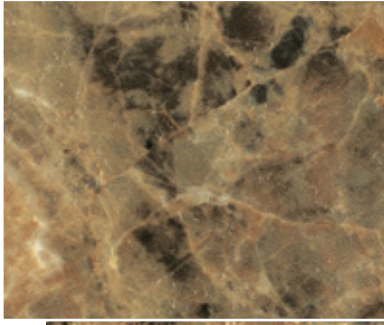




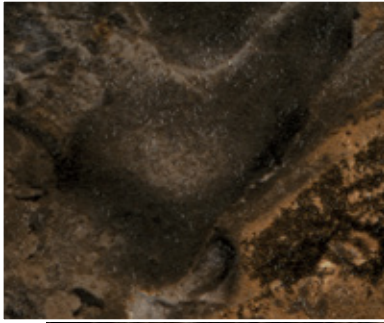
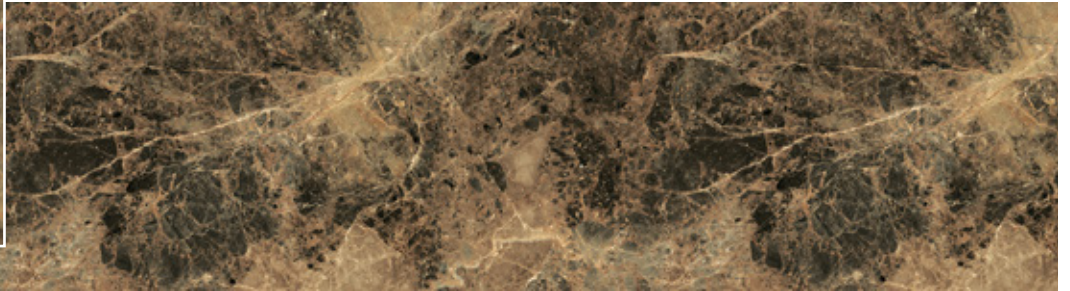
Marmara Cream Ardesia (worktop and breakfast bar with matching upstand)



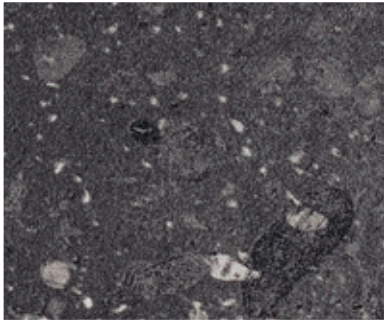
stones: dark



Breccia Paradiso
Etchings 48



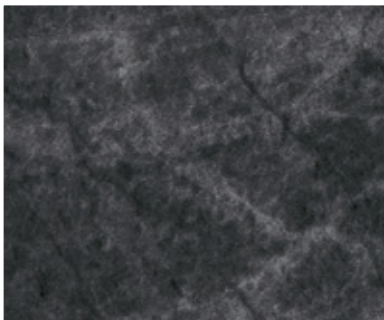
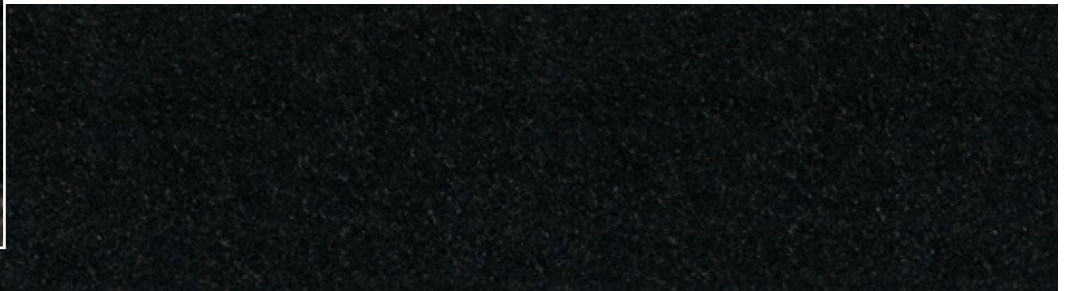
Marbled Cappuccino
Etchings 48



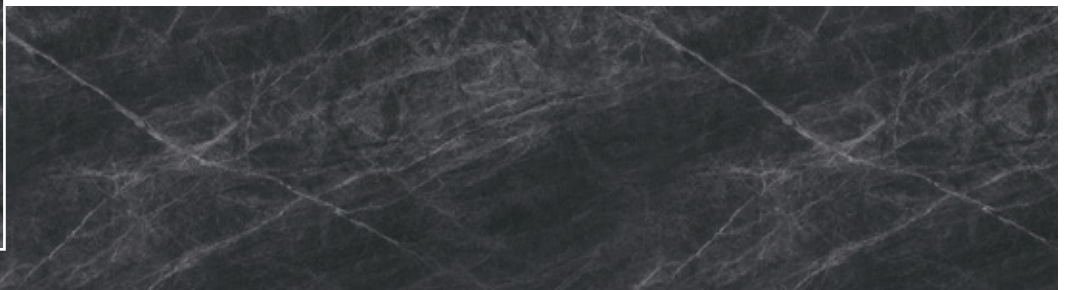
Charcoal Riverstone
Gisten



Black Granite
Crystal



Jet Sequoia
Ardesia







Charcoal Riverstone Glisten (worktop with matching splashback)





engineered

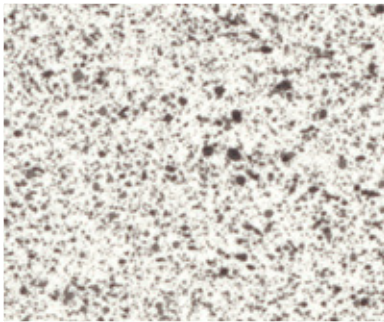


Liquid Glass *Gloss (splashback)*
Moon Caststone *Matte 58 (worktop and breakfast bar)*

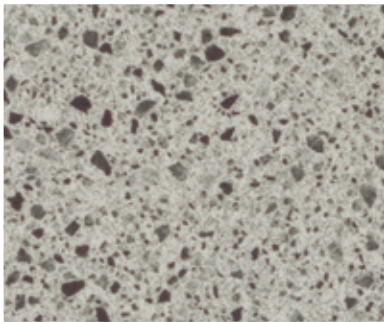
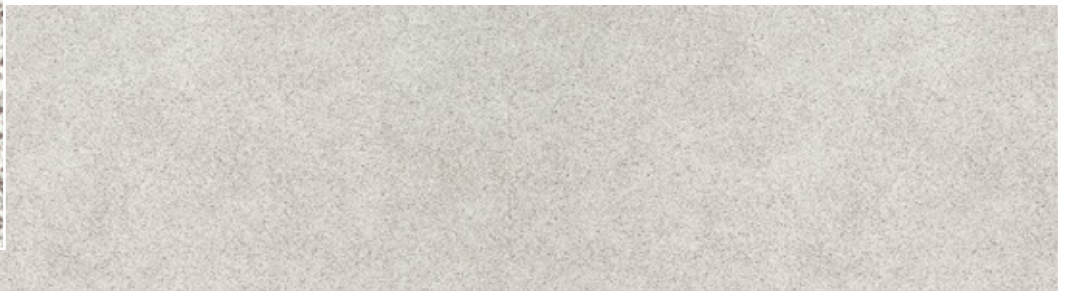
engineered



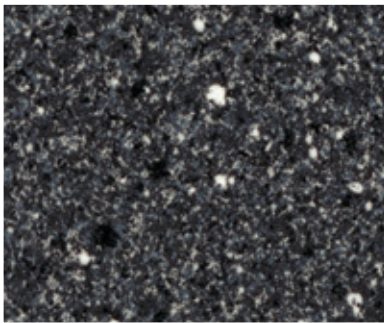
Ice Quarstone
Ardesia



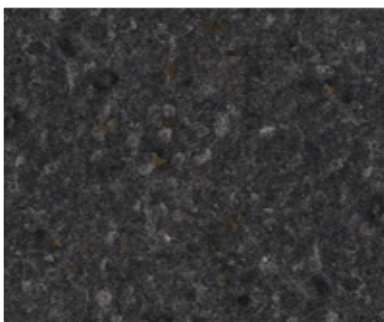
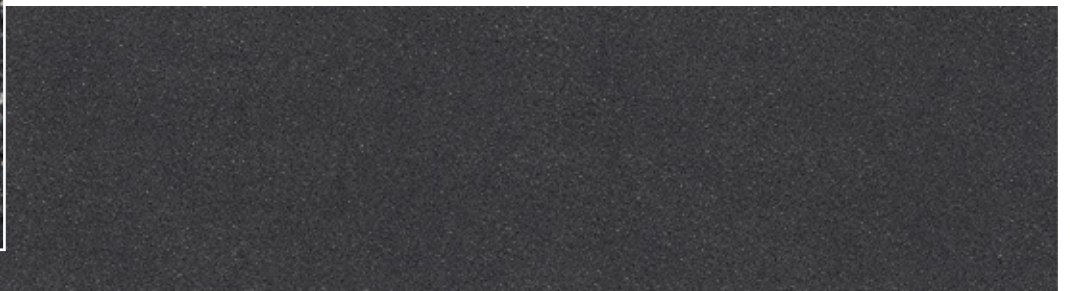
Lava Dust
Crystal



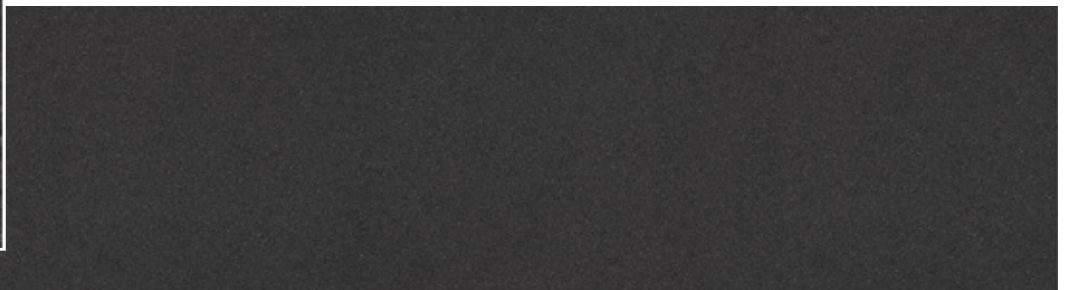
Silver Caststone
Matte 58



Black Fleck
Crystal



Smoke Quarstone
Ardesia







Liquid Glass *Gloss (splashback)*
Moon Caststone *Matte 58 (worktop and breakfast bar)*



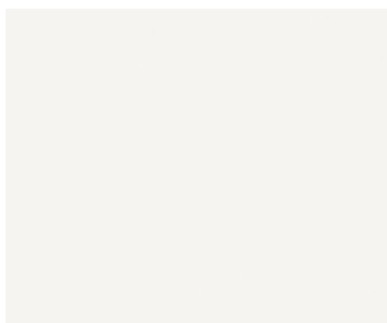
metal



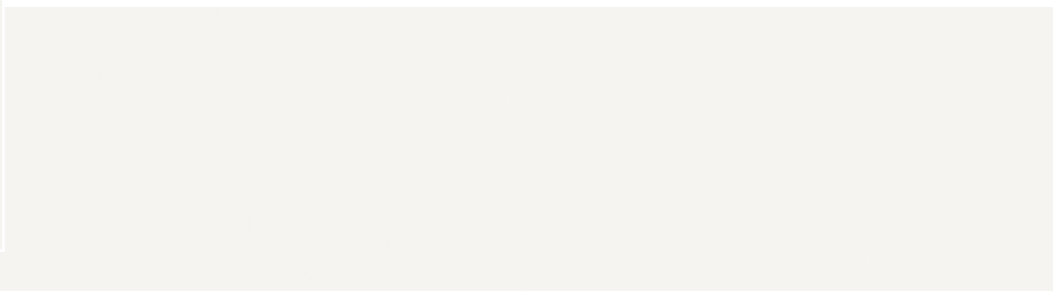
Xenon
Matte 58



solid colours



White
Matte 58



Diamond Black
Matte 58





White Matte 58 (worktop and matching splashback)

add the finishing touch

Matching splashbacks for that continuous look.

Whatever your Formica Prima® worktop, there's a splashback and upstand available to match. So the option of creating a seamless look is enticingly easy.

Each of our 34 matching splashbacks are available in 1210mm heights, adding unprecedented functionality, luxury and style to your fresh, new kitchen.



Charcoal Riverstone Glisten (worktop and matching splashback)

make it a feature

Feature splashbacks for a striking contrast.

Add an unforgettable flourish to your kitchen with one of ten feature splashbacks. It's the simplest way to create that bespoke finish that leaves a lasting impression.

Choose from contemporary pops of colour or three metallic looks.



Denim Gloss (splashback)
White Matte 58 (worktop)

metallics



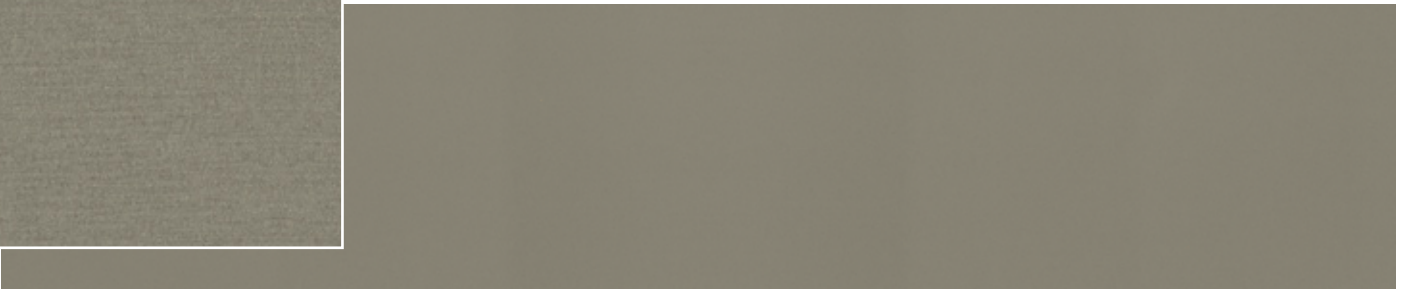
Brushed Zinc
Matte 58



Krypton
Matte 58



Vintage Brush
Matte 58





Brushed Zinc Matte 58 (splashback)
Smokey Planked Walnut Etchings 48 (worktop)

solid colours

Liquid Glass
Gloss

Denim
Gloss

Cassis
Gloss

Marble Green
Gloss

Algae
Gloss

Wasabi
Gloss

Earthenware
Gloss



Algae Gloss (splashback)
Ferro Grafite Etchings 48 (worktop)

sizes and edging

Thickness and edges

All Formica Prima® worktops come in 38mm thickness with a tight curved edge, guaranteeing a sleek and contemporary appearance in every kitchen.

The Perfect Sizes

Even the longest kitchens can be supplied with Prima worktops and breakfast bars. Both are available in 4100mm lengths, while a 3050mm worktop option is also available. All worktops have a 600mm depth. Breakfast bars measure either 670mm or 900mm.

Matching splashbacks and upstands

For the continuous look, matching splashbacks are produced in a 1210mm height, while upstands reach 100mm. Both are supplied in 4100mm lengths.

Feature splashbacks

Make an eye-catching impression with one of our vibrant colours or metallic effect available in either 600mm or 1210mm heights.

Either height is available in 3030mm or 4100mm lengths.

Worktops

3050 x 600 x 38 mm

4100 x 600 x 38 mm

Breakfast Bars

4100 x 670 x 38 mm

4100 x 900 x 38 mm

Upstand

4100 x 100 x 20 mm

Matching Splashback

4100 x 1210 x 6 mm

Feature Splashbacks

3030 x 600 x 6 mm

3030 x 1210 x 6 mm

4100 x 600 x 6 mm

4100 x 1210 x 6 mm

why prima?

The full Formica Prima® Collection does more than just look good, it combines beautiful design with superb functionality.



Durable



Water resistant surface



Stain resistant surface



Ultra hygienic



Easy to clean



Simple installation



size and availability

Decor	Code	Texture	Palette	Worktop		Breakfast Bar		Upstand	Splashback
				3050 x 600 x 38 mm	4100 x 600 x 38 mm	4100 x 670 x 38 mm	4100 x 900 x 38 mm	4100 x 100 x 20 mm	4100 x 1210 x 6 mm
Amber Kashmir	FP6227	Etchings 48	Warm Stones	●	●	●	●	●	●
Beech Butcherblock	FP4615	Matte 58	Light Woods	●	●	●	●	●	●
Black Fleck	FP5013	Crystal	Engineered	●	●	●	●	●	●
Black Granite	FP2699	Crystal	Dark Stones	●	●	●	●	●	●
Breccia Paradiso	FP3457	Etchings 48	Dark Stones	●	●	●	●	●	●
Calacatta Marble	FP3460	Matte 58	Light Stones	●	●	●	●	●	●
Charcoal Riverstone	FP8369	Glisten	Dark Stones	●	●	●	●	●	●
Crema Mascarello	FP3422	Etchings 48	Warm Stones	●	●	●	●	●	●
Diamond Black	FP2253	Matte 58	Solid Colors	●	●	●	●	●	●
Ferro Grafite	FP9483	Etchings 48	Dark Stones	●	●	●	●	●	●
Grey Chalkstone	FP8371	Honed Ceramic	Light Stones	●	●	●	●	●	●
Grey Riverstone	FP5941	Matte 58	Light Stones	●	●	●	●	●	●
Ice Quarstone	FP5212	Ardesia	Engineered	●	●	●	●	●	●
Jet Sequoia	FP3476	Ardesia	Dark Stones	●	●	●	●	●	●
Lava Dust	FP1936	Crystal	Engineered	●	●	●	●	●	●
Limed Wood	FP8375	Parchment	Light Woods	●	●	●	●	●	●
Marbled Cappuccino	FP9482	Etchings 48	Dark Stones	●	●	●	●	●	●
Marfil Antico	FP9478	Etchings 48	Warm Stones	●	●	●	●	●	●
Marfil Cream	FP9477	Etchings 48	Warm Stones	●	●	●	●	●	●
Marmara Cream	FP8368	Ardesia	Warm Stones	●	●	●	●	●	●
Moon Caststone	FP5943	Matte 58	Engineered	●	●	●	●	●	●
Natural Block Walnut	FP0215	Matte 58	Dark Woods	●	●	●	●	●	●
Planked Concrete	FP8378	Ardesia	Light Woods	●	●	●	●	●	●
Raw Planked Wood	FP5940	Woodland	Light Woods	●	●	●	●	●	●
Red Riverstone	FP8377	Matte 58	Warm Stones	●	●	●	●	●	●
Rural Oak	FP8853	Matte 58	Dark Woods	●	●	●	●	●	●
Silver Caststone	FP5942	Matte 58	Engineered	●	●	●	●	●	●
Smoke Quarstone	FP6220	Ardesia	Engineered	●	●	●	●	●	●
Smokey Planked Walnut	FP7411	Woodland	Dark Woods	●	●	●	●	●	●
Stained Planked Wood	FP5939	Woodland	Dark Woods	●	●	●	●	●	●
White	FP1340	Matte 58	Solid Colors	●	●	●	●	●	●
White Bardiglio	FP9306	Ardesia	Light Stones	●	●	●	●	●	●
White Portland	FP8383	Ardesia	Light Stones	●	●	●	●	●	●
Xenon	FP0193	Matte 58	Metals	●	●	●	●	●	●

All worktops and breakfast bars within the Formica Prima® Collection are available in 38mm thickness with a P-3 profiled edge.

Decor	Code	Texture	Palette	Feature Splashbacks			
				3030 x 600 x 6 mm	3030 x 1210 x 6 mm	4100 x 600 x 6 mm	4100 x 1210 x 6 mm
Brushed Zinc	FP8837	Matte 58	Metallic	-	-	●	●
Krypton	FP3735	Matte 58	Metallic	-	-	●	●
Vintage Brush	FP8859	Matte 58	Metallic	-	-	●	●
Algae	FP8796	Gloss	Solid Colors	●	●	-	-
Cassis	FP6903	Gloss	Solid Colors	●	●	-	-
Denim	FP8822	Gloss	Solid Colors	●	●	-	-
Earthenware	FP8241	Gloss	Solid Colors	●	●	-	-
Liquid Glass	FP8240	Gloss	Solid Colors	●	●	-	-
Marble Green	FP8245	Gloss	Solid Colors	●	●	-	-
Wasabi	FP5341	Gloss	Solid Colors	●	●	-	-

Calacatta Marble Matte 58 (worktop)





10 year guarantee of quality

Formica Group warrants to the buyer of a Formica worktop, splashback or upstand that for a period of ten (10) years after installation, it will be reasonably free of defects in materials and workmanship and conform to published data sheets and specifications.

In the event that a product fails to conform to this limited warranty, Formica shall, at its sole option and discretion, either repair or replace such product.

Exclusions. This limited warranty does not cover any damages attributed to causes unrelated to Formica's manufacturing process, including but not limited to incorrect, faulty or improper handling and/or installation, damages caused by unreasonable use, misuse, physical abuse, accidental damage, normal wear and tear, exposure to corrosive elements in the atmosphere, mildew, or the use of harmful cleaning compounds.

Please refer to our Formica Prima® installation and maintenance guides on formica.info for a full list of guidelines, warranties and exclusions.

Please Note:

- The guarantee becomes void once the curved post-formed edge has been cut off
- Due to the inherent properties of gloss, platinum etchings, metallic splashbacks and gloss splashbacks and upstands extreme care should be taken on installation to avoid scratching. Formica Group cannot accept any responsibility for the surface performance of these products if the owner/user fails to follow the installation and care guidelines
- Please consult the installation guide prior to installation

The installation and maintenance guide has been developed for guidance only. Formica Group cannot accept responsibility for the final fitting of your worktop. Colour and surface finish should be checked before installation. Formica Group will not accept any claims for re-fitting costs resulting from mis-matched surface colour or finish. To ensure that your laminate worktop remains in excellent condition, it is essential that all exposed edges of the chipboard are sealed with a silicone sealant or contact adhesive. For a sink cut-out, the exposed raw chipboard should be treated with a water seal or varnish. In addition to this, we would also recommend the use of a purpose made gasket, often supplied with the sink or silicone sealant applied to the perimeter of the sink prior to installation. The hob cut-outs can be protected in the same way but it is also advisable to cover the exposed edges and the edge of the laminate with aluminium foil, to prevent the heat affecting the cut-out.





prima®

0191 622 0101
residential@formica.com

formica.com